

NAUSEA AND/OR VOMITING AT THE END OF LIFE

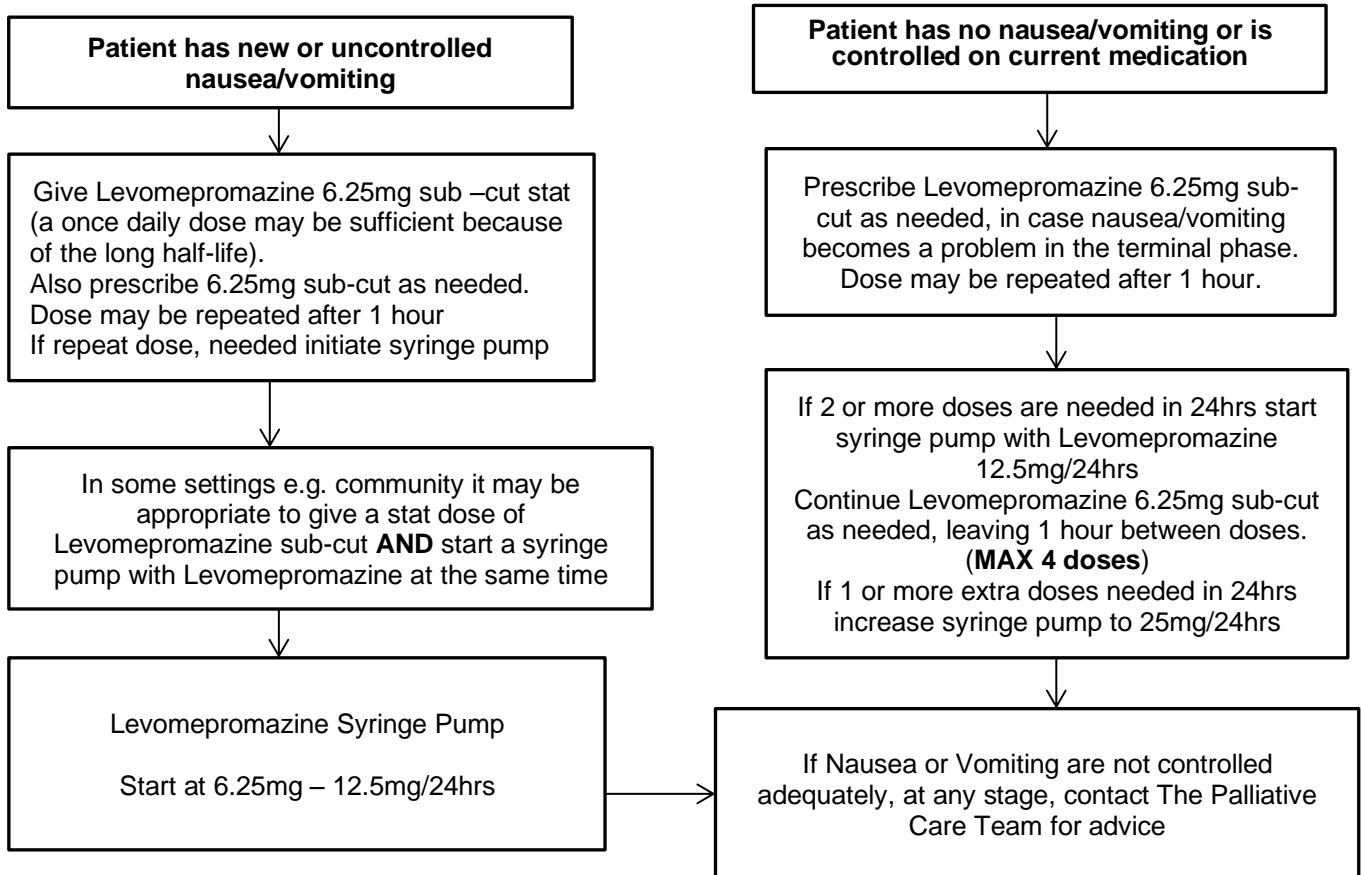
Important Note: This guidance applies to End of Life ONLY

Effective palliation of nausea and vomiting earlier in the illness requires a cause specific approach.

Patients entering the terminal phase with **Good Symptom Control** from an oral anti-emetic should continue the same drug given via a syringe pump when they are unable to take oral medication.

Domperidone should be replaced by **Metoclopramide** and Prochlorperazine (Stemetil) by **Cyclizine**

For new symptoms of Nausea/Vomiting, which are difficult to control: Levomepromazine (Nozinan) is recommended because of its broad spectrum of action.



Levomepromazine doses above 25mg/24hrs have a sedative effect

If symptoms persist or you need help contact the Palliative Care Team or Severn Hospice Tel: 01743 236 565