

## Thank you for thinking of Severn Hospice

Our shops contribute around **£1 million a year** towards our fundraising pot thanks to **people's generous donations** and the shoppers who support us.

They are only as successful at fundraising as the items they are able to sell and shoppers are willing to buy. This handy guide tells you what we love because it helps our shops contribute to the hospice's £7 million fundraising target, and what we have to say 'no' to because we're not able to put it on our shelves for sale.

Registered Charity 512394

# Yes please



Homewares & bric-a-brac



Handbags, shoes & jewellery



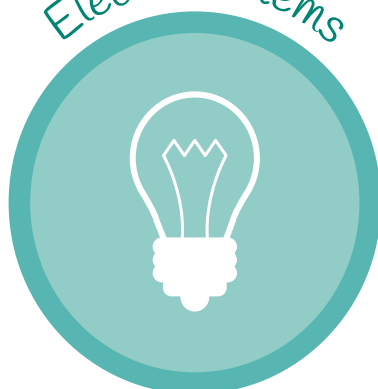
Clothing



Books



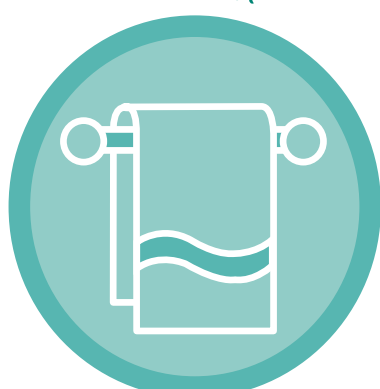
Electrical items



Collectables & antiques



Linen



CDs, DVDs & video games



Toys & games



## Thank you for thinking of Severn Hospice

**We really don't like saying no to things** but there are times when we have to, unfortunately.

These times will be when we can't put your item on the shelf because **we're not allowed to legally, or because we know it'll struggle to find a buyer** and will be taking up valuable space from something we know is more popular with our shoppers. We have to maximise our fundraising space.

Anything we do take but can't resell will cost us money to dispose of safely, which goes against the spirit of your kind thought.

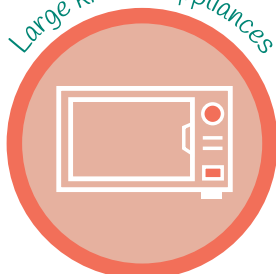
Registered Charity 512394

# No thanks X

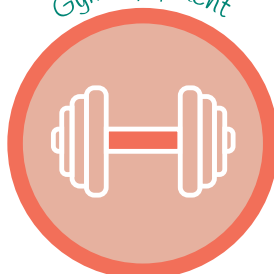
Things that need fuel or gas



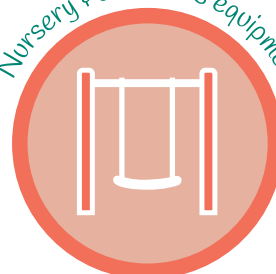
Large kitchen appliances



Gym equipment



Nursery & children's equipment



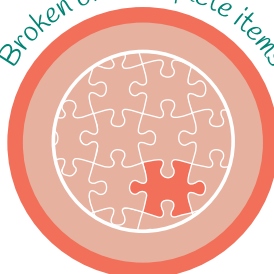
Personal safety equipment



Real fur & ivory



Broken or incomplete items



Machinery without instructions



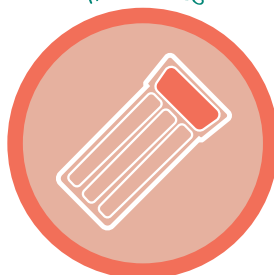
Soft furnishings without fire safety labels



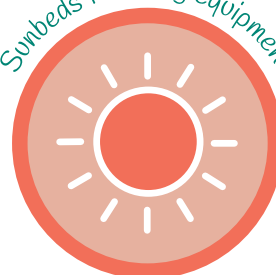
Old or poor-condition bikes



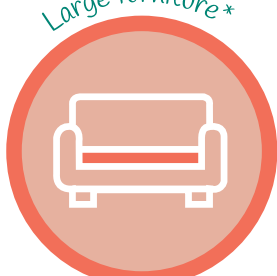
Inflatables



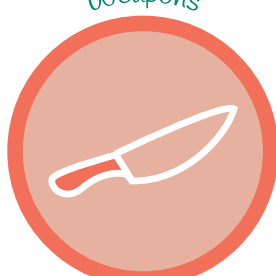
Sunbeds & tanning equipment



Large furniture\*



Weapons



Faulty electrical items



 **Severn Hospice**  
here and at home

\*Contact our furniture store for these donations on 01743 211092

 Registered with  
FUNDRAISING  
REGULATOR