

SEVERN HOSPICE 2016/17



DID YOU KNOW?

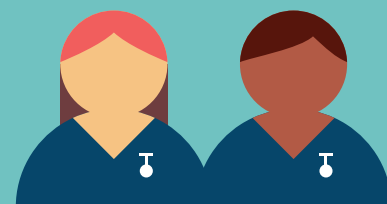
2155
LOCAL
PEOPLE

were
referred to
us last year

We have
cared
for..

APPROX.
27,000
PEOPLE

..in Shropshire and Mid
Wales since we first
opened in 1989



WE EMPLOY
179
NURSES

WE CARE FOR **$\frac{4}{5}$** OF OUR
PATIENTS
AT HOME

522 new patients were
referred to our Hospice
at Home team last year

3499 patients were visited
at home by members
of our Clinical Nurse
Specialist team last year

3,497

THE NO. OF DAY HOSPICE
ATTENDANCES
LAST YEAR

12
DAYS

is the
average
length of
stay for a
patient on
our wards

88p

from each £1
DONATED
goes towards
funding our
services.



We use
the other
12p to help
us make
another £1

Last year we received
£3.6M from the NHS;
for every £1 the
NHS gave us
we provided
£3 worth
of care to
local people



It cost **£10M** last
year to run Severn
Hospice; that's
£27,400 per day

Our supporters
helped raise **£7.11M**
last year; that's
£19,480 per day



Severn
Hospice

We have 24 INPATIENT
BEDS, that's 8 BEDS
per ward
across our
2 HOSPICES
in Bicton
and Apley



It costs **£605** to provide
24HR CARE to a patient
on our inpatient wards

